

IC, TB-IC INDEXING CHUCKS, HYDRAULIC FEED TUBE

分度夾頭/油壓迴轉器

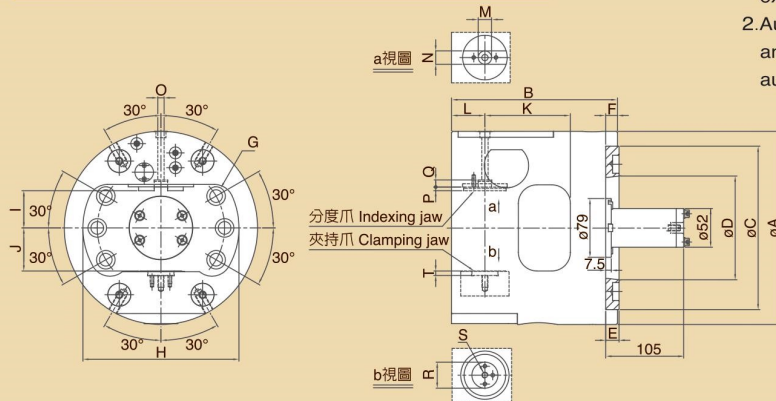
- 1.適合多軸向加工需求例如閥體、十字軸、管接頭等
- 2.自動化設計：搭配迴轉器與自動控制系統。主軸運轉時自動執行90度分度定位。
- 3.離心力補償系統：主軸高速迴轉時能自動補償並減少離心力造成的夾持力損失，使夾持更加穩定並提升工作效率。
- 4.高剛性與高精度結構：最佳化設計的高剛性結構能確保工作時的精度需求與長時間使用的穩定性。

新產品
NEW

專利產品
Patent Protected

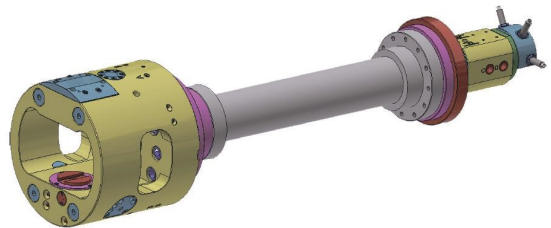


尺寸圖 » Dimensions



1. Specialize for multi-axis manufacturing requirement, ex: Valve, Cross bearing, hose joint...etc.
2. Automatic mechanism: With the special hydraulic feeder and automatic control unit, the chuck could 90 indexing automatically during the spindle turning.
3. Centrifugal force compensation: Compensation structure could reduce the clamping force lost during high speed turning and stabilize the work-clamping.
4. The optimal structure design provides the best rigidity and precision.

應用實例 » Operation Example



規格表 » Specifications

單位/UNIT:mm

型式/規格 MODEL /SPEC.	A	B	C	D	E	F	G	H	I
IC-260	260	223.5	220	139.719	18	16	6-M16x2P(PCDø171.4)	210	50
型式/規格 MODEL /SPEC.	J max.	J min.	K	L	M	N	O	P	Q
IC-260	58	40	115	45	18	18	8.5	5	9.55
型式/規格 MODEL /SPEC.	S	øR	T	分度角度 Index Angle			活塞面積 Piston Area (cm ²)	柱塞行程 Plunger Stroke (mm)	
IC-260	M8x1.25P	35	6	4x90°			43	18	
型式/規格 MODEL /SPEC.	最大設定油壓壓力 Max. Hydr Pressure Kgf/cm ² (MPa)		最高迴轉速 Max. Speed r.p.m (min ⁻¹)	最大靜夾持力 Max. Gripping Force kgf (kN)		搭配油壓迴轉器 Matching Hydraulic feed tube	夾持範圍 Gripping Range 最大迴轉直徑 厚度 Max. rotation dia Thickness		
IC-260	51	(4.9)	3600	2000	(19.6)	TB-IC	200	70	