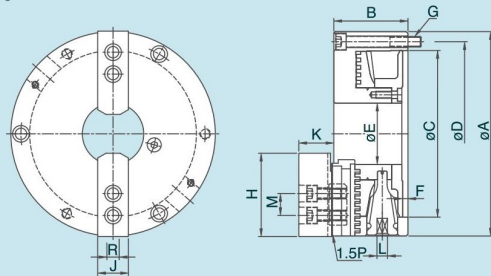


TNT 2-JAW STEEL BODY CHUCKS

齒式二爪鋼殼夾頭

1. 可替代修整油壓生爪成型盤。
2. 爪仔可前後任意調整，加大夾持工件範圍。
3. 生爪及硬爪與CNC車床油壓爪共用。
4. 鋼殼結構於高速迴轉時安全性高，耐磨性強，使用壽命長。
5. 轉動板手扭力較小操作順暢。
6. 兩爪夾頭僅提供強力生爪。

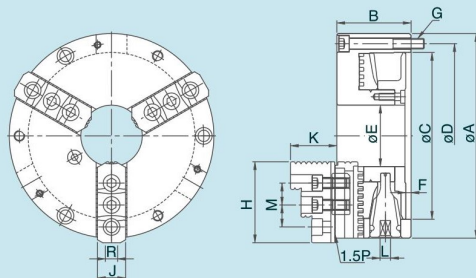
尺寸圖 >> Dimensions



NT 3-JAW STEEL BODY CHUCKS

齒式三爪鋼殼夾頭

尺寸圖 >> Dimensions



1. Can be used as a "Forming plate" for machining soft jaws.
2. Hard jaws and soft jaws can be adjusted just like on a power Chuck to increase the gripping range.
3. Hard jaws as well as Soft jaws are interchangeable with those of power chucks.
4. Chuck Body is made of steel to enhance safety operations for high speed machining.
5. The Chuck Handle can be operated easily and smoothly.
6. 2-jaw Steel Body only provide the powerful type soft jaws.

特點配合圖示說明 >> Illustrate



可替代修整油壓生爪成型盤

The chuck can be used as a "Forming plate" for machining soft jaws.



爪仔可前後任意調整加大夾持工件範圍

Top jaws can be adjusted back and forth easily, thus increasing gripping range.



硬爪與油壓夾盤硬爪共用

Hard jaws are interchangeable with those of power chucks.



生爪與油壓夾盤生爪共用

Soft jaws are interchangeable with those of power chucks.

選配附件



連結盤

Optional accessory: Mounting plate.

規格表 >> Specifications

單位/UNIT:mm

型式/規格 MODEL /SPEC.	A	B	C	D	E	F	G	H	J	K	L	M	R	最高轉速 Max. Speed r.p.m.(min ⁻¹)	把握範圍 Max.Gripping Diameter		淨重 Weight (kg)
															外徑把握 O.D.Clamping (mm)	內徑把握 I.D.Clamping (mm)	
TNT-07	193	78	155	172	58	5	3-M10x1.5P	73	31	38	11	20	12	3200	ø8~ø235	ø66~ø235	14.4
TNT-09	233	85	190	210	70	5.5	3-M12x1.75P	95	35	40	12	25	14	2800	ø11~ø280	ø85~ø280	22.3

規格表 >> Specifications

NT-07	193	78	155	172	58	5	3-M10x1.5P	78	28	46	11	20	12	3200	ø8~ø235	ø66~ø235	13.1
NT-09	233	85	190	210	70	5.5	3-M12x1.75P	92	32	52	12	25	14	2800	ø11~ø280	ø85~ø280	21.2
NT-10	275	91	230	250	89	5.5	3-M12x1.75P	101.5	37	56	12	30	16	2400	ø12~ø330	ø92~ø330	30.5
NT-12	310	104	260	285	105	7	3-M12x1.75P	116	47	67	14	30	21	2100	ø15~ø370	ø104~ø370	46.1